

Technical data

CODE:

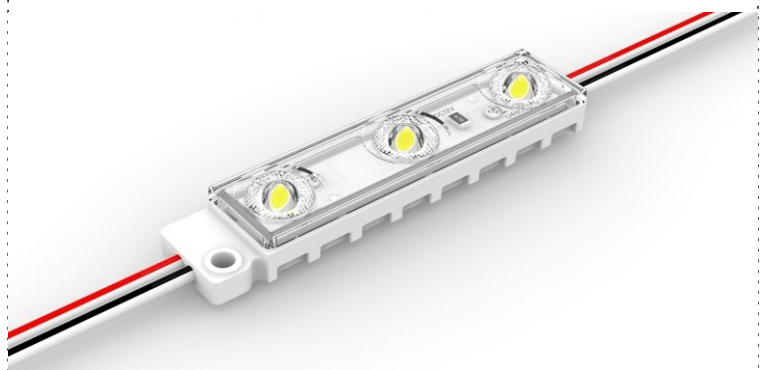
561823

PRODUCT:

LED MODULE DXE-3

NOTE:

TECHNICAL DATA

IMAGE:**LAST UPDATE:**

11/2022

LED MODULE DXE-3



Model DXE-3

Suitable for 50 - 203 mm back - lighting lightbox

Features:

- High efficiency 2835 LED
- 165° special optical lens
- Compact design, extreme cost & performance
- Premium components for reliability and durability
- 2 years warranty

Technical parameters

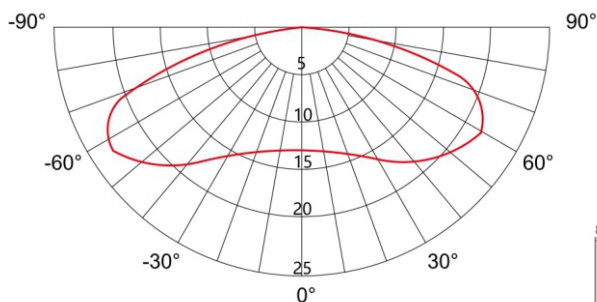
Color	W
CCT	7 000 K ± 5%
Efficiency	100 lm/W
Lumen	72 lm
Dimension	67,9 x 13 x 8,5 mm
Power	0,72 W ± 10%
Working voltage	12 V
Driving mode	Constant voltage
Center distance	150 mm
Cascading	50 pcs
Working temp	-40 ~ +60°C
Storage temp	-40 ~ +70°C
IP grade	IP67

Max power supply load

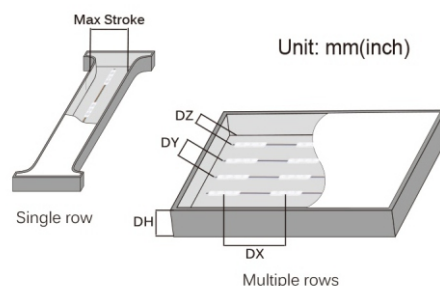
Power (W)	60	100	150	200	300
Quantity (pcs)	66	111	166	222	333

* Note: Recommended Qty = Driver Power * 0,8 / Module Power

Light distribution

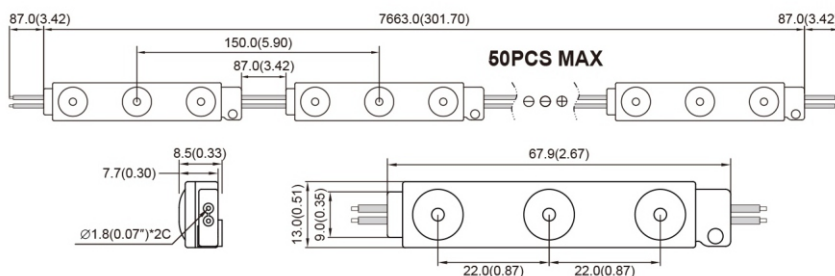


Installation



Profile drawings

Unit: mm (inch)



Technical parameters

Depth DH	Horizontal space DX	Max stroke DY (single row)	Row spacing DY (multiple rows)	Surface illumination
50,8 mm	101,6 mm	127 mm	50,8 mm	2000 - 2500 lux
63,5 mm	127 mm	152,4 mm	63,5 mm	
76,2 mm	139,7 mm	177,8 mm	76,2 mm	1200 - 1500 lux
101,6 mm	150 mm	228,6 mm	101,6 mm	
127 mm	150 mm	279,4 mm	127 mm	900 - 1100 lux
152,4 mm	150 mm	330,2 mm	127 mm	
203,2 mm	150 mm	381 mm	127 mm	

* Note: For multiple rows installation, DZ (margin space) = 1/2 DY

Package

Carton size	Qty/bag	Qty/carton	Gross weight	Net weight
530 x 375 x 275 mm	100 pcs	1600 pcs	13,5 kg	11,6 kg