

Technical data

CODE: 541221k/ 541222k / 541223k/ 541224

PRODUCT: LED MODULE D175-1,2,3,4

NOTE: TECHNICAL DATA

IMAGE:



LAST UPDATE:

9/2021

LED MODULE D175-1/D175-2/D175-3/D175-4

0,36 W 0,72 W 1,08 W 1,2 W	72 lm 144 lm 216 lm 240 lm	170°	IP 66	5 years
-------------------------------------	-------------------------------------	------	----------	------------

HIGH LIGHT EFFICIACY **200 lm/W**

Injection molding plus ultrasonic welding technology. Integrated transparent 170° optic lens.

Features:

- Powered by high output 2835 LED
- Constant current
- 20 psc per string
- CE, RoHS, UL, TUV, BIS, CB and LM-80 certified

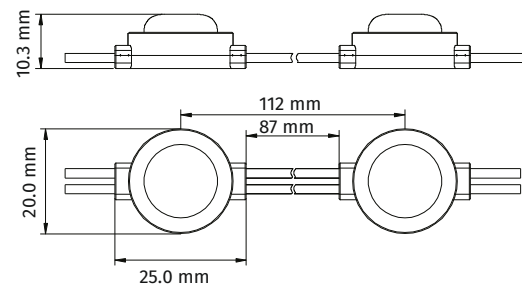
Applications

Apply to 4-15 cm depth illuminate letter or light box at airports, metros, bank, buildings and shopping malls, etc.

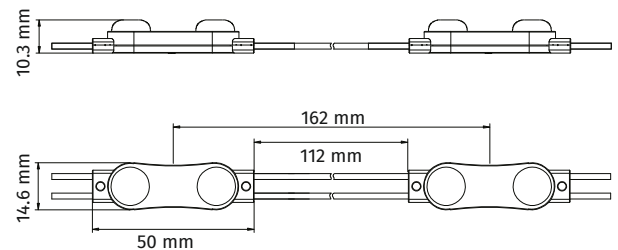
Items	D175-1	D175-2	D175-3	D175-4
CCT (K)	7000 K	7000 K	7000 K	7000 K
Beaming angle (°)	170	170	170	170
Voltage (V)	12 V DC	12 V DC	12 V DC	12 V DC
Power (W)	0,36	0,72	1,08	1,2
Luminous flux (lm)	72	144	216	240
CRI (Ra)	≥ 70	≥ 70	≥ 70	≥ 70
Driving Method	constant current	constant current	constant current	constant current
Dimension (mm)	25 x 20 x 10,3	50 x 14,6 x 10,3	76 x 14,6 x 10,3	48 x 44 x 10,3
Maximum Connection (PCS)	20	20	20	20
Working tem. (°C)	-25 ~ +60°C	-25 ~ +60°C	-25 ~ +60°C	-25 ~ +60°C
Storage tem. (°C)	-25 ~ +70°C	-25 ~ +70°C	-25 ~ +70°C	-25 ~ +70°C
Protection grade	IP66	IP66	IP66	IP66

Dimension

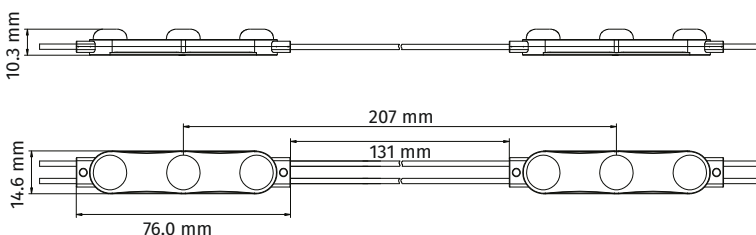
D175-1



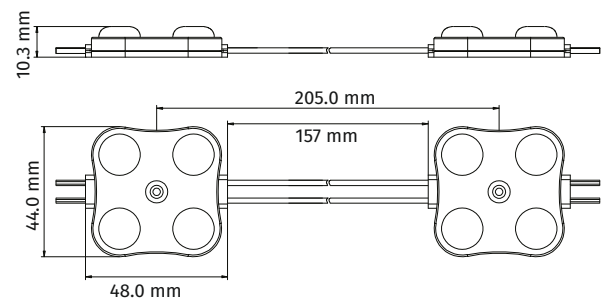
D175-2



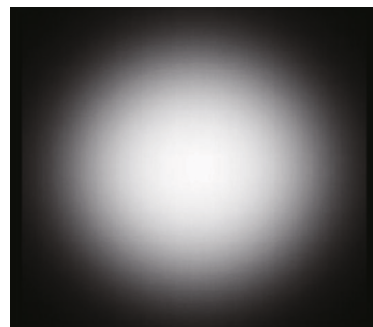
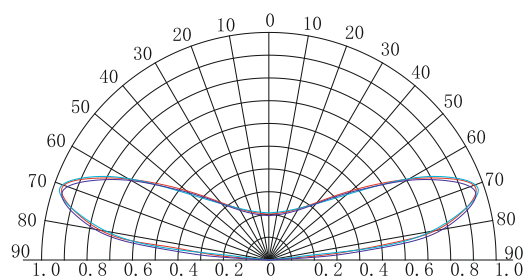
D175-3



D175-4



Beaming angle



Reference scheme

D175-1

Depth (mm)	Distance (mm)	Density (psc/m ²)	Illumination (lux)	Illumination effect
Dz = 40	Dx = 80 Dy = 70	179	3 500	Uniform illumination
Dz = 60	Dx = 100 Dy = 90	111	3 100	Uniform illumination
Dz = 80	Dx = 110 Dy = 100	91	2 800	Uniform illumination
Dz = 100	Dx = 120 Dy = 110	76	2 300	Uniform illumination

D175-2

Depth (mm)	Distance (mm)	Density (psc/m ²)	Illumination (lux)	Illumination effect
Dz = 60	Dx = 100 Dy = 90	111	6 000	Uniform illumination
Dz = 80	Dx = 110 Dy = 110	76	5 500	Uniform illumination
Dz = 100	Dx = 120 Dy = 130	55	4 700	Uniform illumination
Dz = 120	Dx = 160 Dy = 150	42	3 100	Uniform illumination
Dz = 140	Dx = 160 Dy = 150	42	2 500	Uniform illumination

D175-3

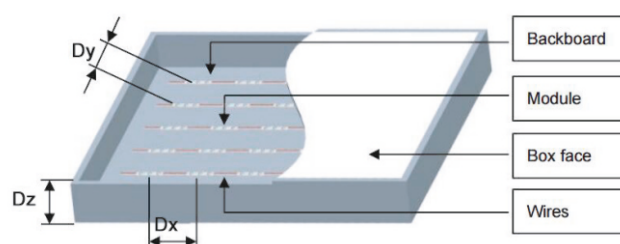
Depth (mm)	Distance (mm)	Density (psc/m ²)	Illumination (lux)	Illumination effect
Dz = 60	Dx = 130 Dy = 100	77	5 300	Uniform illumination
Dz = 80	Dx = 150 Dy = 130	51	4 700	Uniform illumination
Dz = 100	Dx = 170 Dy = 150	39	4 200	Uniform illumination
Dz = 120	Dx = 190 Dy = 170	31	3 500	Uniform illumination
Dz = 140	Dx = 190 Dy = 170	31	3 000	Uniform illumination

D175-4

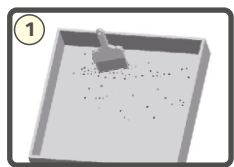
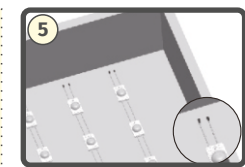
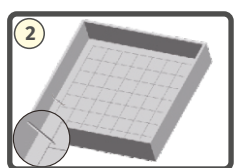
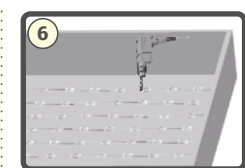
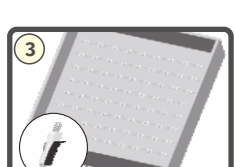
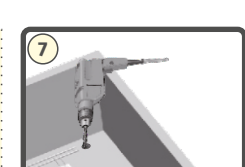
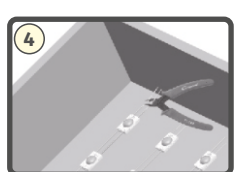
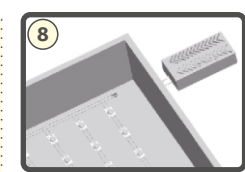
Depth (mm)	Distance (mm)	Density (psc/m ²)	Illumination (lux)	Illumination effect
Dz = 60	Dx = 130 Dy = 130	59	6 000	Uniform illumination
Dz = 80	Dx = 150 Dy = 150	44	5 800	Uniform illumination
Dz = 100	Dx = 170 Dy = 170	35	4 800	Uniform illumination
Dz = 120	Dx = 190 Dy = 190	28	3 900	Uniform illumination
Dz = 140	Dx = 190 Dy = 190	28	3 200	Uniform illumination

Remark

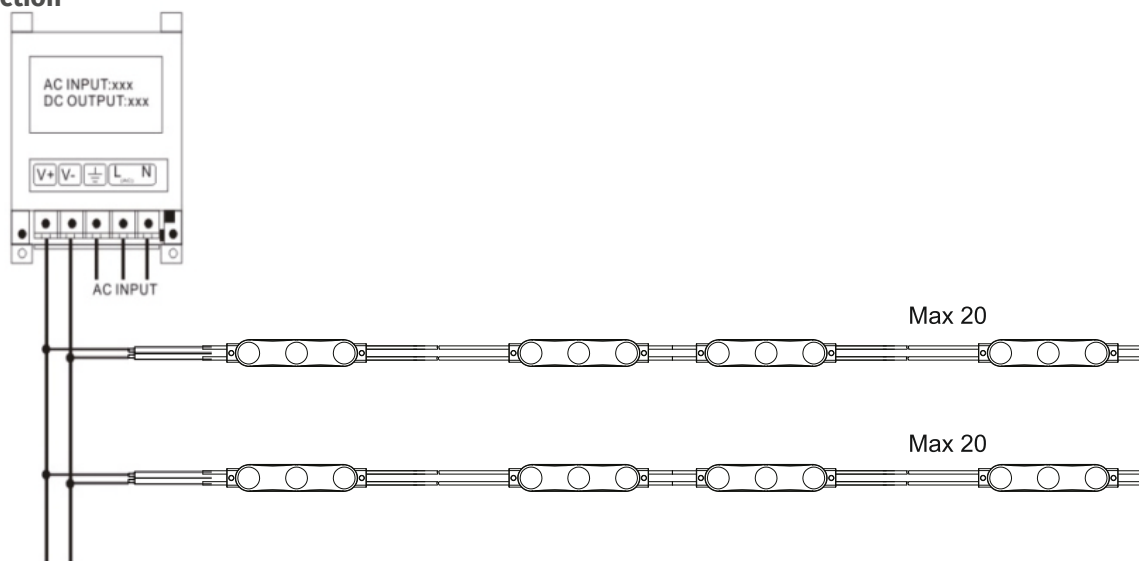
- The transmittance of the Acrylic was 30%
- The above data is for reference only



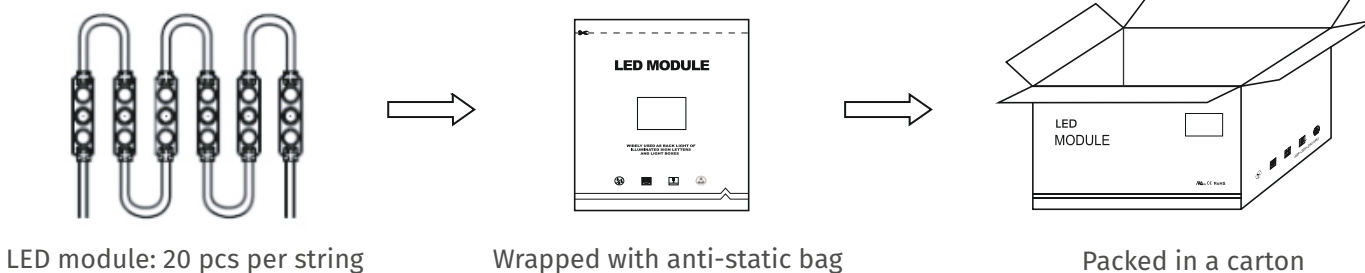
Installation guidance

- | | | | |
|--|--|---|---|
|  | <p>1 Clean inside the light box</p> |  | <p>5 Strip the end wire for 10 mm and cap with the wire connector. Waterproof and anti-corrosion must be done on the connectors.</p> |
|  | <p>2 Determine the appropriate layout</p> |  | <p>6 Adjust modules to the optimal position and secure with screws
⚠ Note: Avoid breaking the module and wire when fixing with a drill</p> |
|  | <p>3 Peel tape backing and stick modules into place</p> |  | <p>7 Drill a hole for connecting power cable. Fixation and protection for the cable must be done on the hole.
⚠ Note: Avoid breaking the light box in drilling the hole</p> |
|  | <p>4 Remove the unneeded modules
⚠ Note: Cut in the middle position of the wires between modules</p> |  | <p>8 Connection to the power cable and make sure that the polarity for connection is correct
⚠ Note: Red wire is positive and black is negative</p> |

Wire connection



Packing



Packing specification

Antistatic bag adopted

Part Number	D175-1	D175-2	D175-3	D175-4
Carton dimension (mm)	490 x 450 x 220	490 x 450 x 220	490 x 450 x 220	490 x 450 x 220
Bags per carton	10	10	10	12
Quantity per bag (pcs)	200	120	100	80
Quantity per carton (pcs)	2 000	1 200	1 000	960
Net weight (kg)	10,2 (1±10%)	8,1 (1±10%)	10,6 (1±10%)	15,2 (1±10%)
Gross Weight (kg)	12,2 (1±10%)	10,2 (1±10%)	12,8 (1±10%)	17,5 (1±10%)

Due to the packing manner difference, please subject to the original products in case of discrepancy found between the picture and actual product.

Instructions

- Disassembling or modifying the product is forbidden.
- Installation with power on is forbidden.
- Any organic solvent chemical is forbidden.
- Acidic or alkaline adhesive is forbidden when install, neutral glass cement could be used for installation purpose, make it drying in open environment for four hours.
- Isolation and corrosion prevention on all wiring points and wire ends.
- Make sure the power wire is thick enough and ensure the voltage and connections are connected correctly before power on.
- This product should be used in a sign, do not expose it in opening site.
- Installation, maintaining should be done by professional staff.
- 20 pcs in a serial connection maximum.
- The power wire between power supply and module should be less than two meters to keep the same brightness on all parts.
- Initial location with 3M tape, then secure with screws.

Declaration

- Warranty: 5 years.
- In order to ensure the safety, the broken wires need to be replaced by the manufacturer or the service agent or by the staff with the similar qualification.
- The given data in the specification was based on the laboratory testing, there may be discrepancy found in the actual products.
- The given drawings in the specification are only for reference, there may be discrepancy found in the actual products.
- The products are subject to change without prior notification.



RoHS



CB LM-80