

# Technical data

**CODE:**

521513

**PRODUCT:**

LED MODULE DXF-3-C

**NOTE:**

TECHNICAL DATA

**IMAGE:****LAST UPDATE:**

9/2023

# LED MODULE DXF-3-C

IP <b>68</b>	3 LED	DC <b>12V</b>	50.000 hours
-----------------	----------	------------------	-----------------

## Model DXS-3-C

### Lens cover - Viewing Angle 140°

- Optimized for channel heights 50~100mm
- Perfect uniformity ratio of illumination
- Reduce LED module usage

### Polycarbonate Cover Lens

- LED protection against Sulfur dioxide(SO2) and hazardous substances
- Capable of wet exposed applications with durable weather protective molding
- Prevention against defect while installing

### Compact design and easy installation

- 3M double sided tape
- Cost-reduction in installation

### Perfect humid & waterproof (enhanced-IP68)

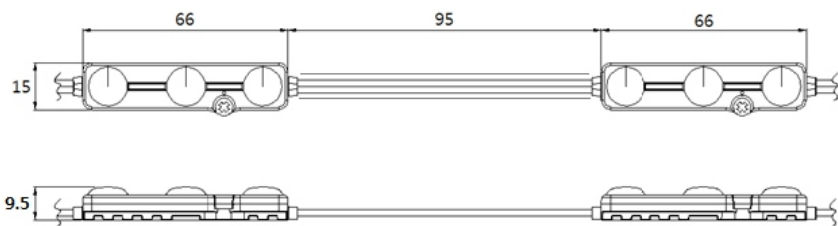
### High efficiency in energy saving - 97 lm/W

### Long life time - 50,000 Hr

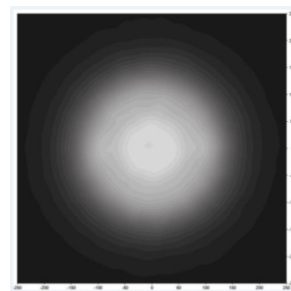
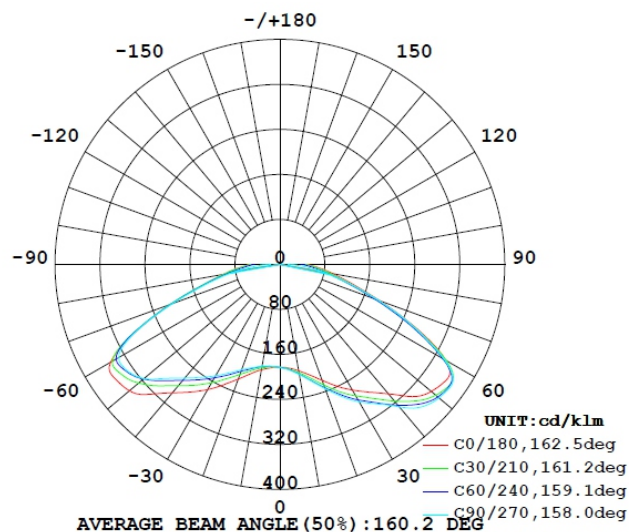
### Application note

Advertising Sing Board  
Channel letter lighting  
Any decorative lighting  
Architectural, outdoor, exterior lighting

## Dimensions



## Photometric characteristics



## Specification

Power Dissipation	1,2 W
Forward voltage	12 VDC
Forward current	100 mA
Luminous flux	112 lm
Luminance efficiency	93 lm/W
CCT (K)	6500k
CRI (Ra)	80
LED Spec	2835 pkg, 0,2W SAMSUNG x 3EA
Viewing angle	160°
Module Pitch	160±5 mm
Dimension	66 x 15 x 7,4 mm
Weight	10g
Max in series	50 (recommend: 35)
Operating temp	-20 ~ 50°C
Waterproof	IP68
Life time	50.000 Hour
Cable wire	UL-AWM2468, awg20x2C
Case materials	ABS, UL-94
Encapsulant materials	Polycarbonate, UL-94